

REMOTE SENSING DAYS

16-17 MAY, 2018

THE EVENT IS ORGANIZED BY
THE FINNISH REMOTE SENSING
CLUB WITH MEMBERS



OFFICIAL SPONSORS



REMOTE SENSING DAYS 16-17 MAY, 2018

The Finnish Remote Sensing Days is an intensive two-day event where academia and industry meet to discuss and present new innovations in Remote Sensing. Among presented topics are air quality, space weather, forestry, bioeconomy, arctic and snow. A panel will discuss how higher education can secure our future needs.

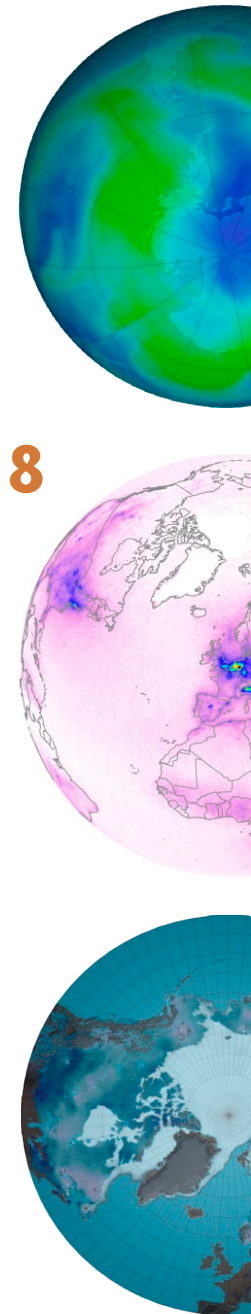
Do not miss the opportunity to meet and interact with the experts to foster new ideas and create partnerships. Networking is possible during the breaks and in the end of day one with snacks and refreshments. The conference participation, including the social event, is free of charge but pre-registration is required.

The event gives an overview on latest advances in Finnish remote sensing and provides an inspiring environment for professional networking.

Registration until 11th May

<http://www.kaukokartoituskerho.fi/2018/registration>

Follow us on Twitter
#RSDays2018



Place: Brainstorm auditorium, Finnish Meteorological Institute (FMI) Dynamicum, Erik Palménin aukio 1, 00560 Helsinki

WEDNESDAY 16 MAY

Session 1 - Recent highlights and new opportunities – Johanna Tamminen, FMI

- 9:00 Welcome – Juhani Damski, FMI
- 9:10 Remote sensing research at FMI – Johanna Tamminen, FMI
- 9:25 New Space Economy – Markus Ranne, Business Finland
- 9:40 Iceye X1 satellite - SAR images from Finland – Pekka Laurila, Iceye
- 9:55 Remote sensing activities at SYKE – Sampsa Koponen, Finnish Environment Institute
- 10:10 Coffee & Posters

Session 2 - New applications using satellite data – Miranda Saarentaus, Geowise

- 10:40 BioCarbon Monitoring Platform – Petteri Pihlajamäki, Pöyry
- 11:00 Forestry Thematic Exploitation Platform in forestry – Renne Tergujeff, VTT
- 11:15 Increasing impact of satellite-based observations for air pollution monitoring – Iolanda Ialongo, FMI
- 11:30 Forest mapping – Joni Norppa, Satellio
- 11:45 The BalticSatApps project – Ali Nadir Arslan, FMI
- 12:00 Lunch

Session 3 - Remote sensing and bioeconomy – Pekka Hurskainen, University of Helsinki

- 12:45 Arbotimber for forest information – Tuomo Kauranne, Arbonaut
- 13:00 LiDAR intensities in tree species discrimination – Petteri Packalen, UEF, School of Forest Sciences
- 13:15 ESA Business Applications – Miranda Saarentaus, Geowise
- 13:30 Multisource Applications for Forest Bioeconomy – Erkki Tomppo, Bitcomp
- 13:45 3 poster pitching
- 14:00 Coffee & Posters

Panel discussions – Higher education and future needs – Jaan Praks, Aalto University

- 14:30 Panel discussions
- 15:00 Poster pitching
- 15:30 Posters & networking – snacks & refreshments
- 17:00 Sauna (17:00-21:00)

THURSDAY 17 MAY

Session 4 - From remote sensing to environmental applications – Anu-Maija Sundström, FMI

- 9:00 Future of Copernicus – Mikko Strahlendorff, FMI
- 9:15 FMI Arctic Space Centre – Jyri Heilimo, FMI
- 9:30 Vaisala remote sensing – Pekka Rossi, Vaisala

- 9:45 Compact Spectral Imaging and Measurement Solutions – Antti Näsilä
- 10:00 IceTrails – Janne Tolonen, Navidium
- 10:15 Reaktor Space Lab – Tuomas Tikka, Reaktor Space Lab
- 10:30 Coffee & Posters

Session 5 - Meteorology and climate – Matti Möttöus, VTT

- 10:55 Future views of the meteorological satellite developments – Kenneth Holmlund, EUMETSAT
- 11:20 AC SAF atmospheric composition products for rapid response & monitoring – Seppo Hassinen, FMI
- 11:30 Global XCO₂ anomalies: Space-based observations of CO₂ emission – Janne Hakkarainen, FMI
- 11:50 Lunch

Session 6 – Snow & ice applications – Kari Luojus, FMI

- 12:50 ESA EE10, snow satellite mission proposal – Juha Lemmetyinen, FMI
- 13:05 Seasonal snow cover mass in NH and the Arctic – Kari Luojus, FMI
- 13:20 Iceberg detection in dual-pol C-band SAR imagery – Alexandru Gegiuc, FMI
- 13:35 Landfast ice detection using dual-polarized C-band SAR imagery – Juha Karvonen, FMI
- 13:50 Coffee & Posters

Session 7 – Advanced methods & remote sensing – Johanna Tamminen, FMI

- 14:15 AI – Artificial Intelligence – Pekka Röyttä, Spectral Engines
- 14:30 Spectral libraries for forest reflectance modeling – Aarne Hovi, Aalto University
- 14:45 Plume Top Height Estimation using SLSTR – Timo Virtanen, FMI
- 15:00 Pareto-optimal model in tropical tree species mapping – Rami Piironen, University of Helsinki
- 15:15 Bayesian Aerosol Retrieval for aerosol properties and surface reflectance – Antti Lipponen, FMI
- 15:30 Remote sensing at the Centre of Excellence of Inverse Modelling and Imaging – Samuli Siltanen, University of Helsinki
- 15:45 Closing words – Johanna Tamminen, FMI

